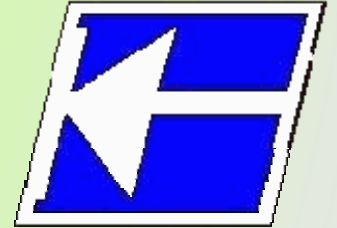


Centro Federal de Educação Tecnológica de Santa Catarina
Departamento Acadêmico de Eletrônica
Conversores Estáticos



Simulação de Conversores CA-CA de Baixa Frequência

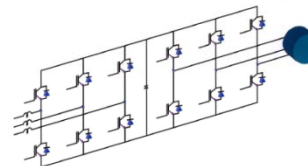
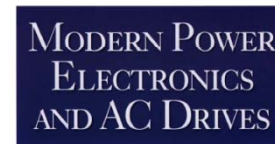
Prof. Clóvis Antônio Petry.

Florianópolis, abril de 2008.

Bibliografia para esta aula

Capítulo 11: Controlador de tensão AC

1. Variadores CA monofásicos.



BIMAL K. BOSE

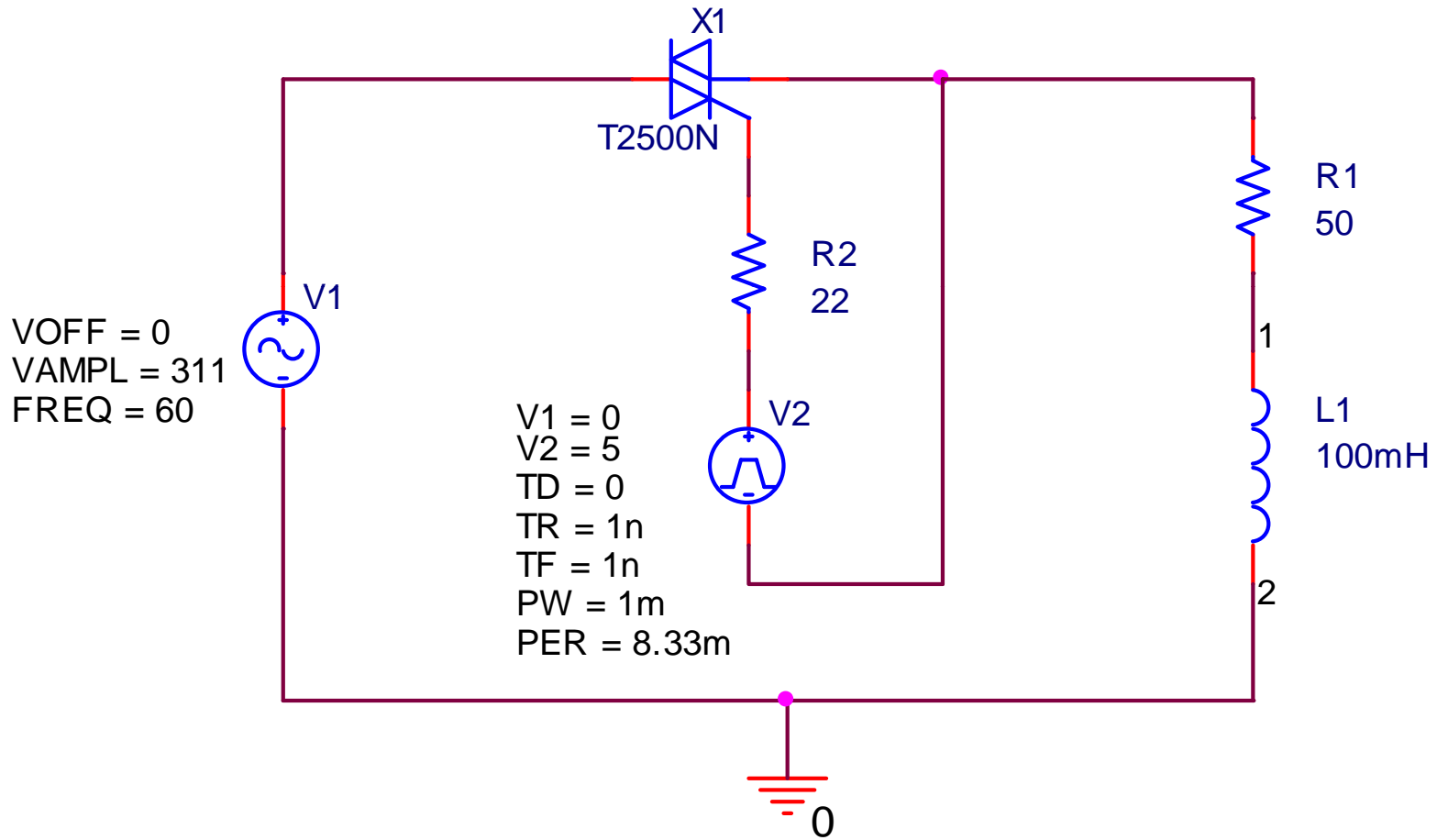
www.cefetsc.edu.br/~petry

Nesta aula

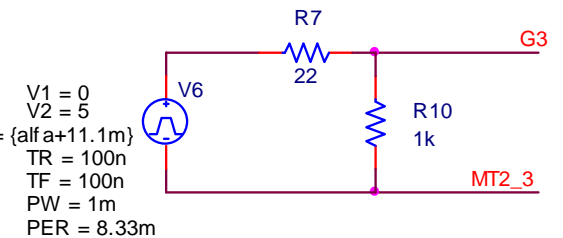
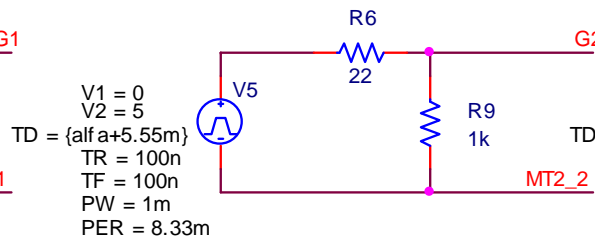
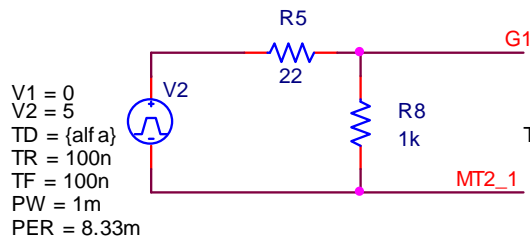
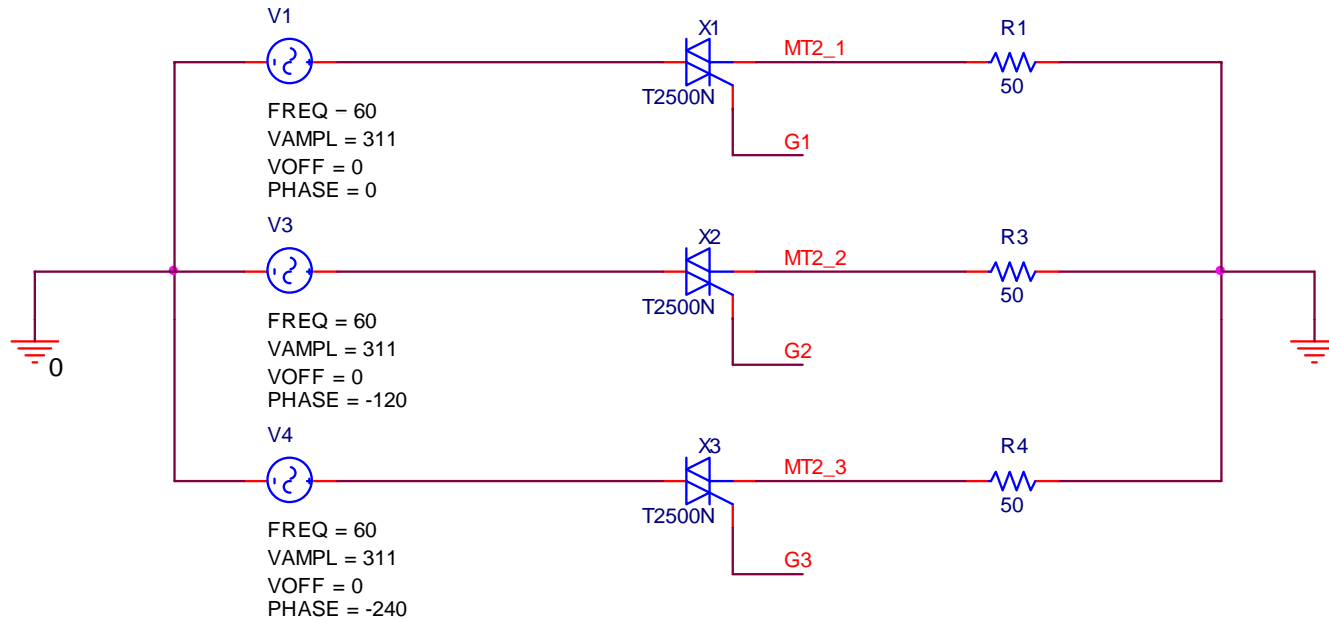
Gradadores:

1. Gradador monofásico:
 - Carga resistiva;
 - Carga RL.
2. Gradador trifásico com carga resistiva;
3. Controle por ciclos inteiros;
4. Gradador monofásico de baixo custo.

Gradador monofásico



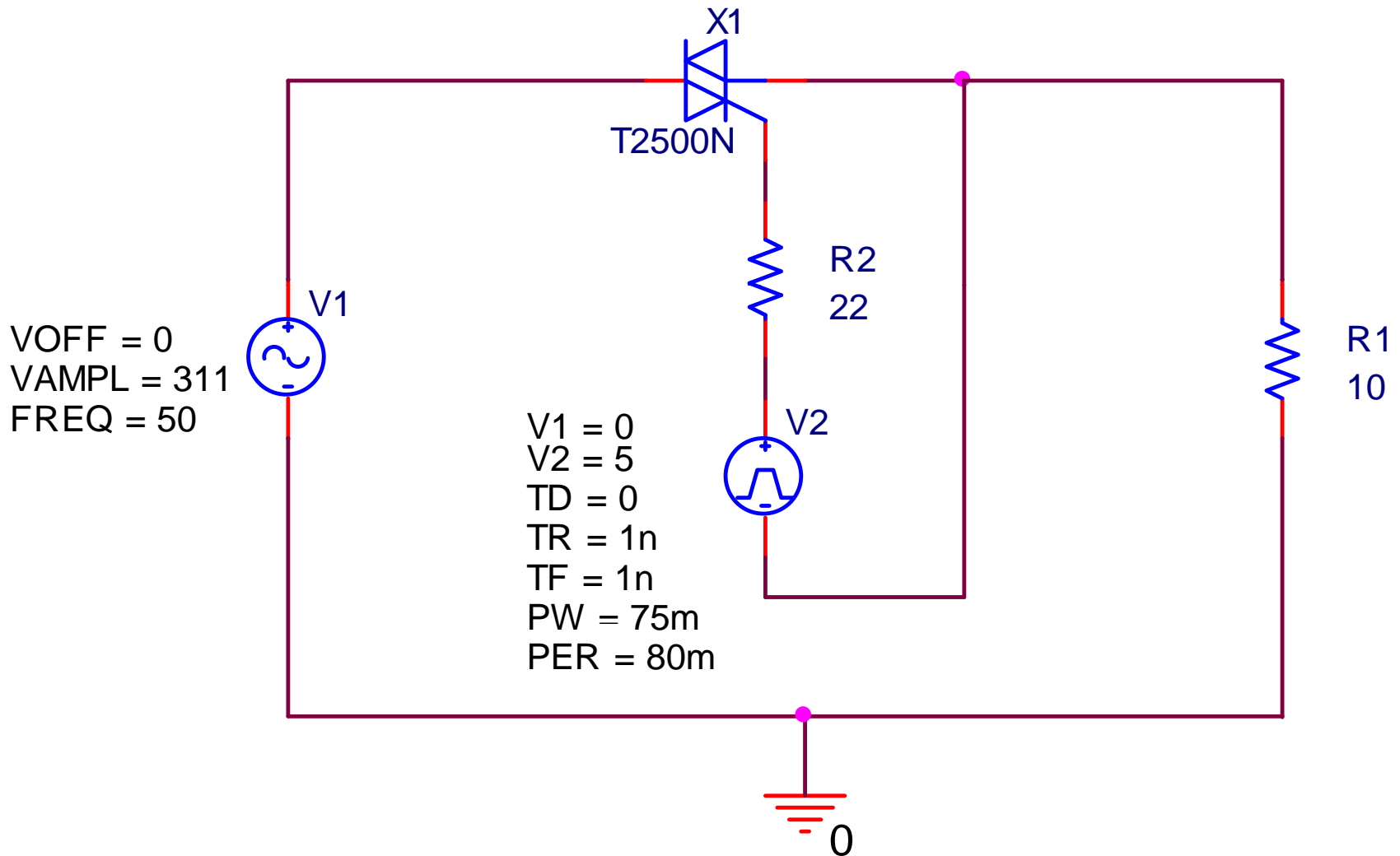
Gradador trifásico



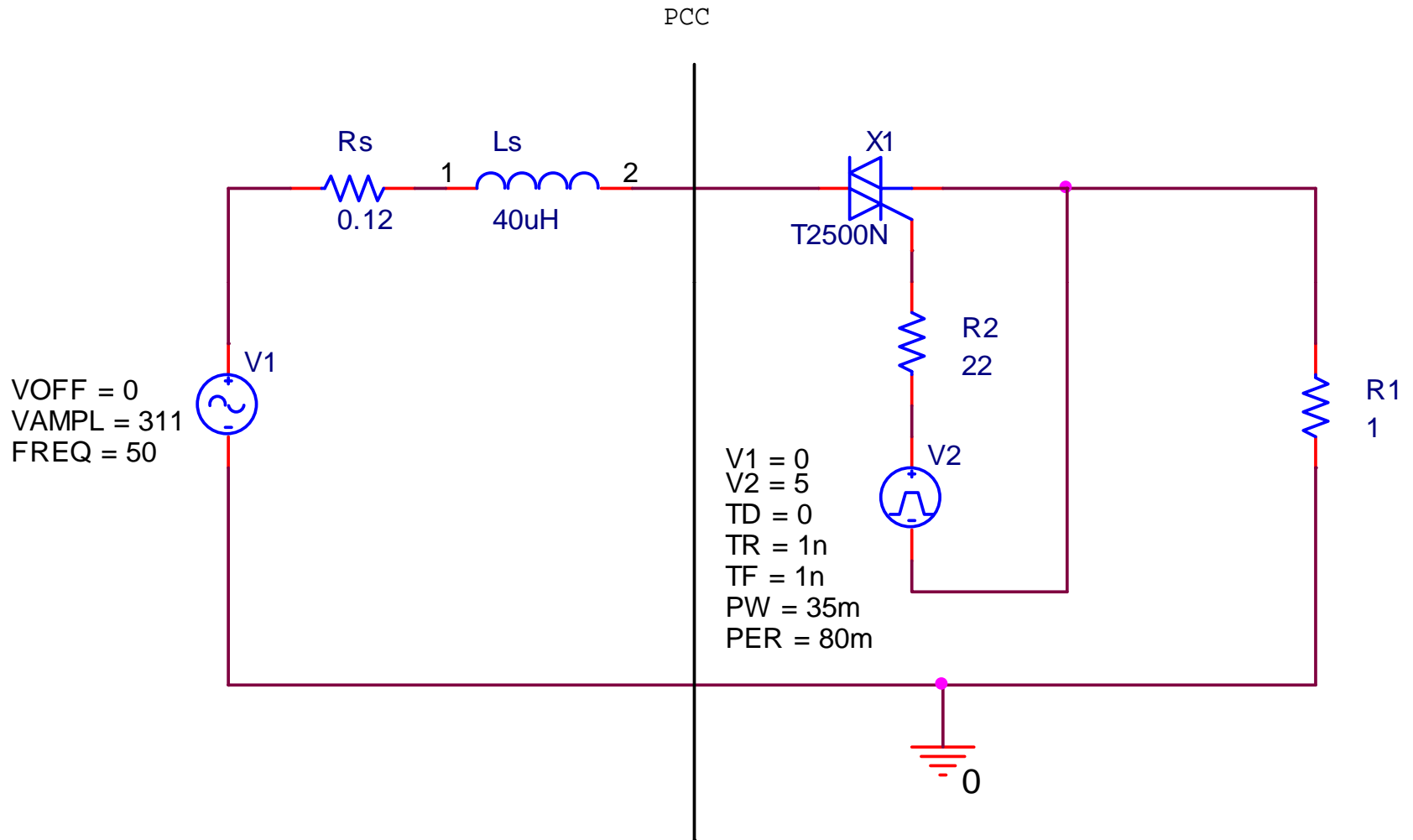
PARAMETERS:

Alfa = 2m

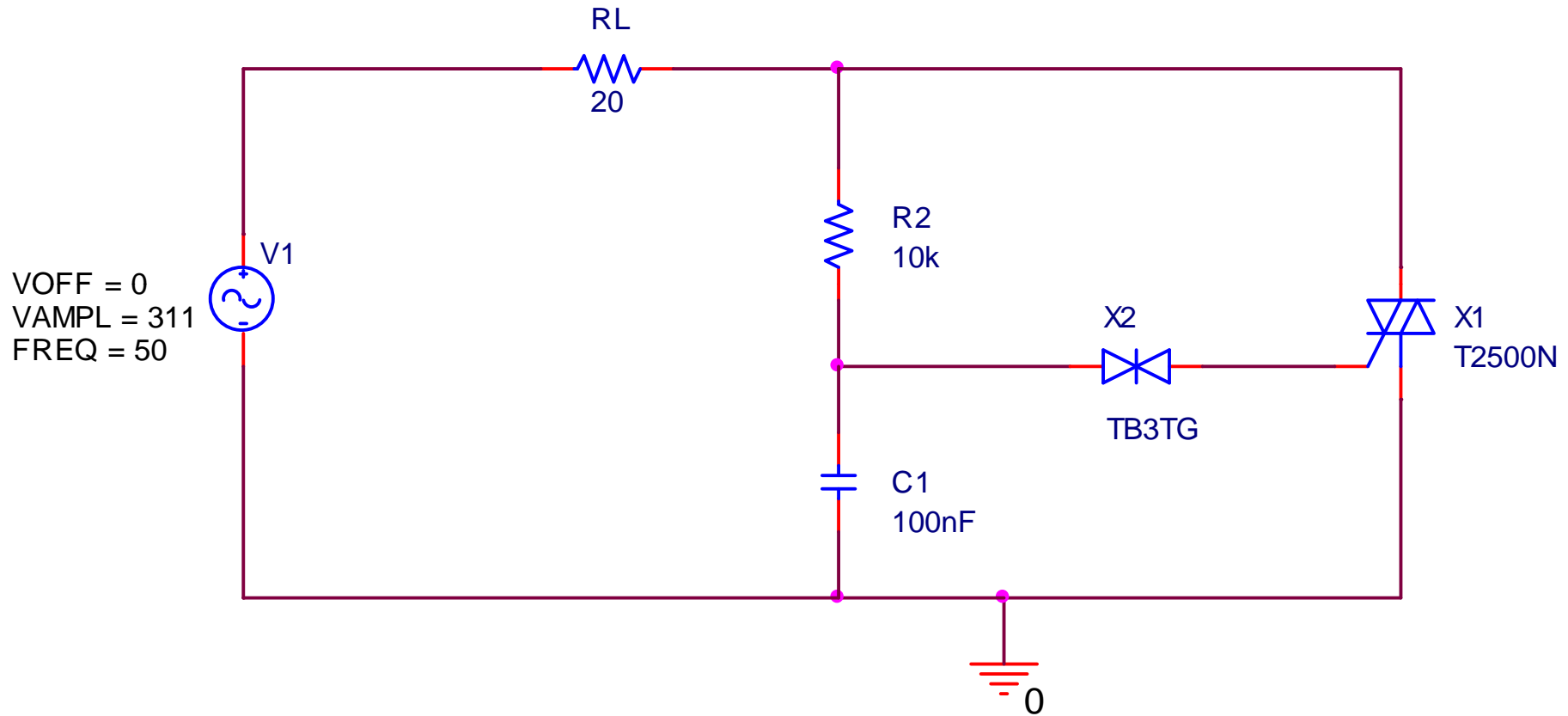
Controle por ciclos inteiros



Controle por ciclos inteiros



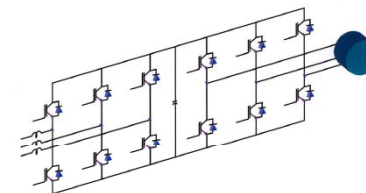
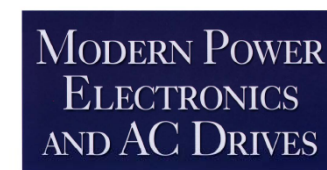
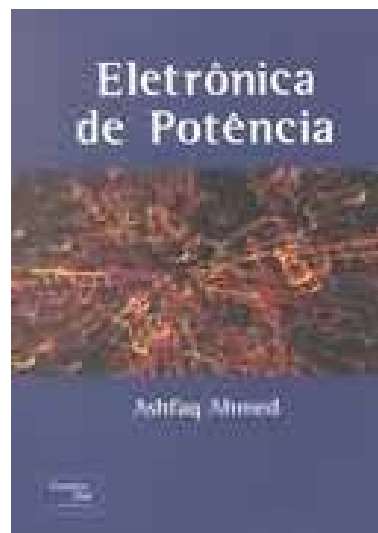
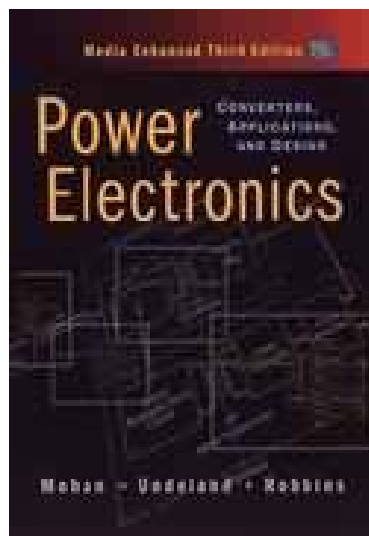
Gradador de baixo custo



Próxima aula

Conversores CA-CA:

1. Simulação de conversores CA-CA PWM.



www.cefetsc.edu.br/~petry