

Centro Federal de Educação Tecnológica de Santa Catarina
Departamento Acadêmico de Eletrônica
Conversores Estáticos



Conversores CC-CA
Simulação de Inversores de Tensão

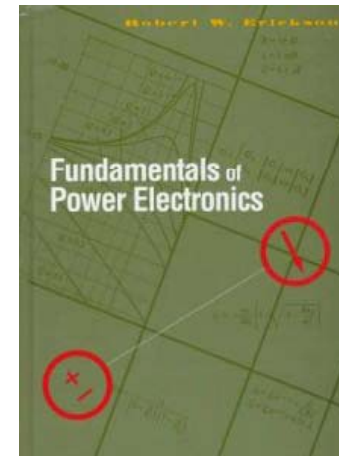
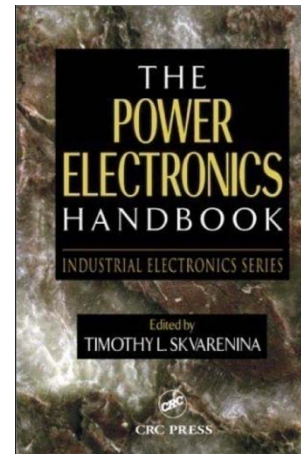
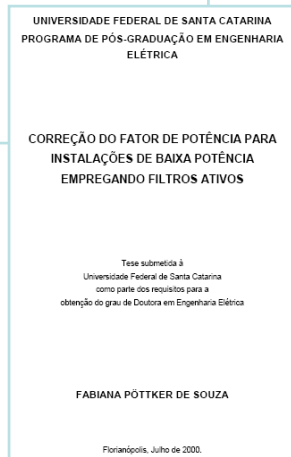
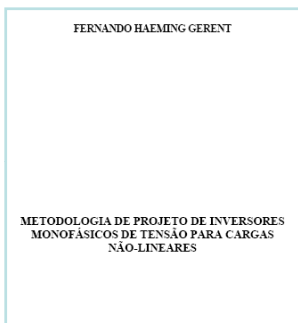
Prof. Clóvis Antônio Petry.

Florianópolis, junho de 2008.

Bibliografia para esta aula

Capítulo 10: Inversores

1. Simulação de inversores de tensão.



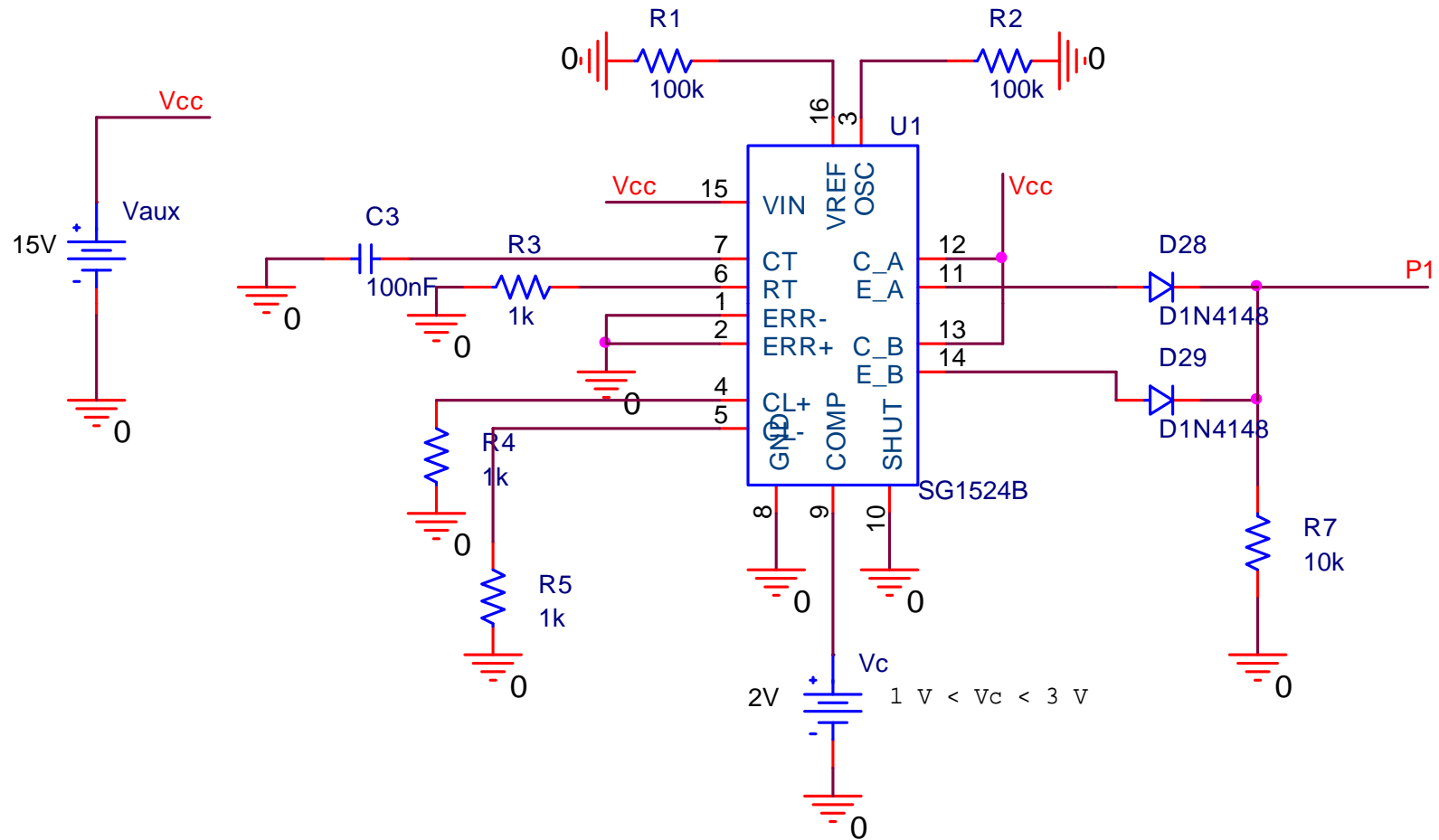
www.cefetsc.edu.br/~petry

Nesta aula

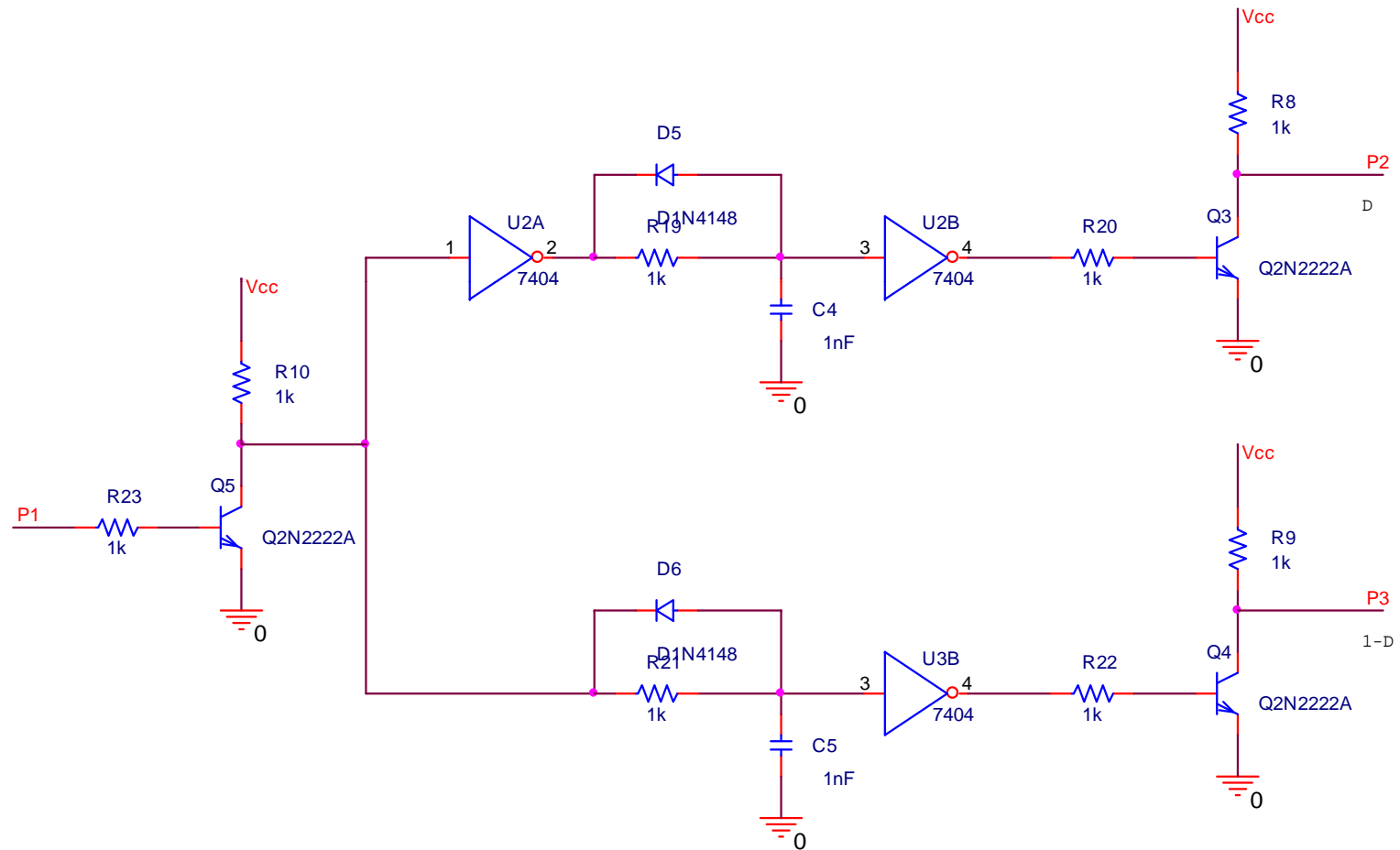
Simulação de inversores de tensão:

1. Circuito de geração dos sinais de comando;
2. Circuito de geração de tempo morto;
3. Circuito de acionamento dos interruptores;
4. Conversor cc-cc bidirecional;
5. Conversor cc-cc bidirecional com snubber;
6. Inversor meia ponte monofásico;
7. Inversor ponte completa monofásico PWM;
8. Inversor ponte completa monofásico PWM senoidal;
9. Inversor ponte completa trifásico PWM senoidal.

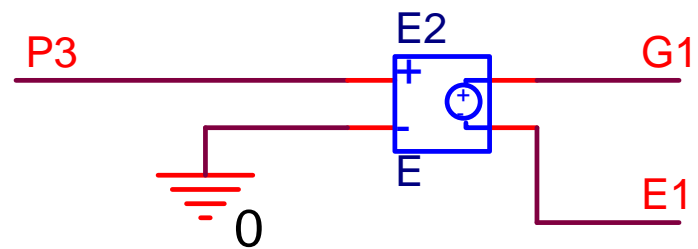
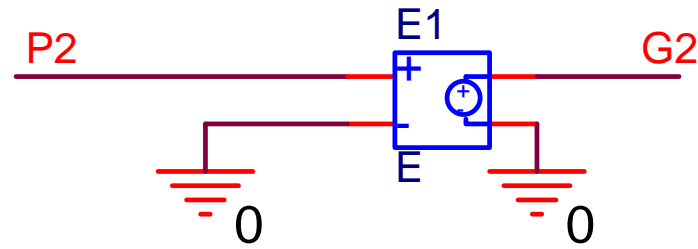
Circuito de geração dos sinais de comando



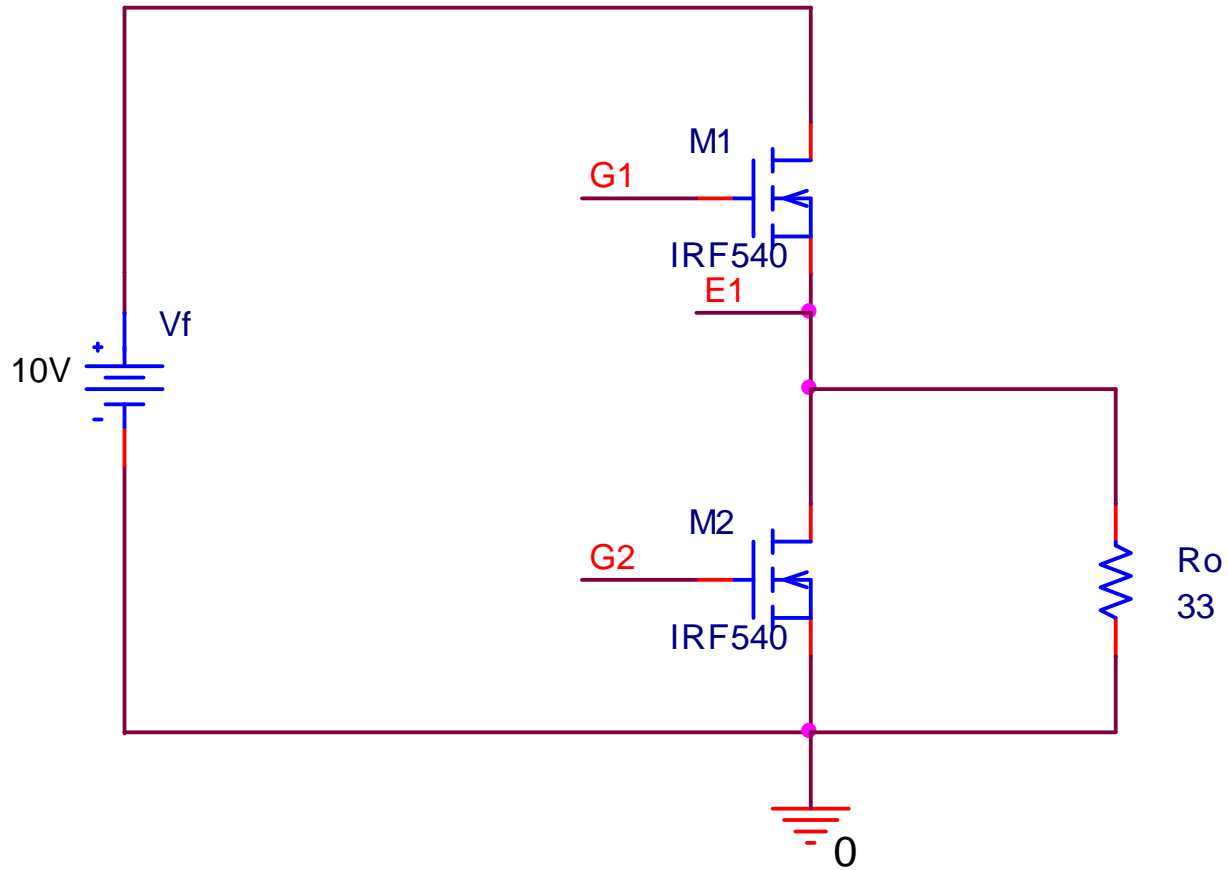
Circuito de geração do tempo morto



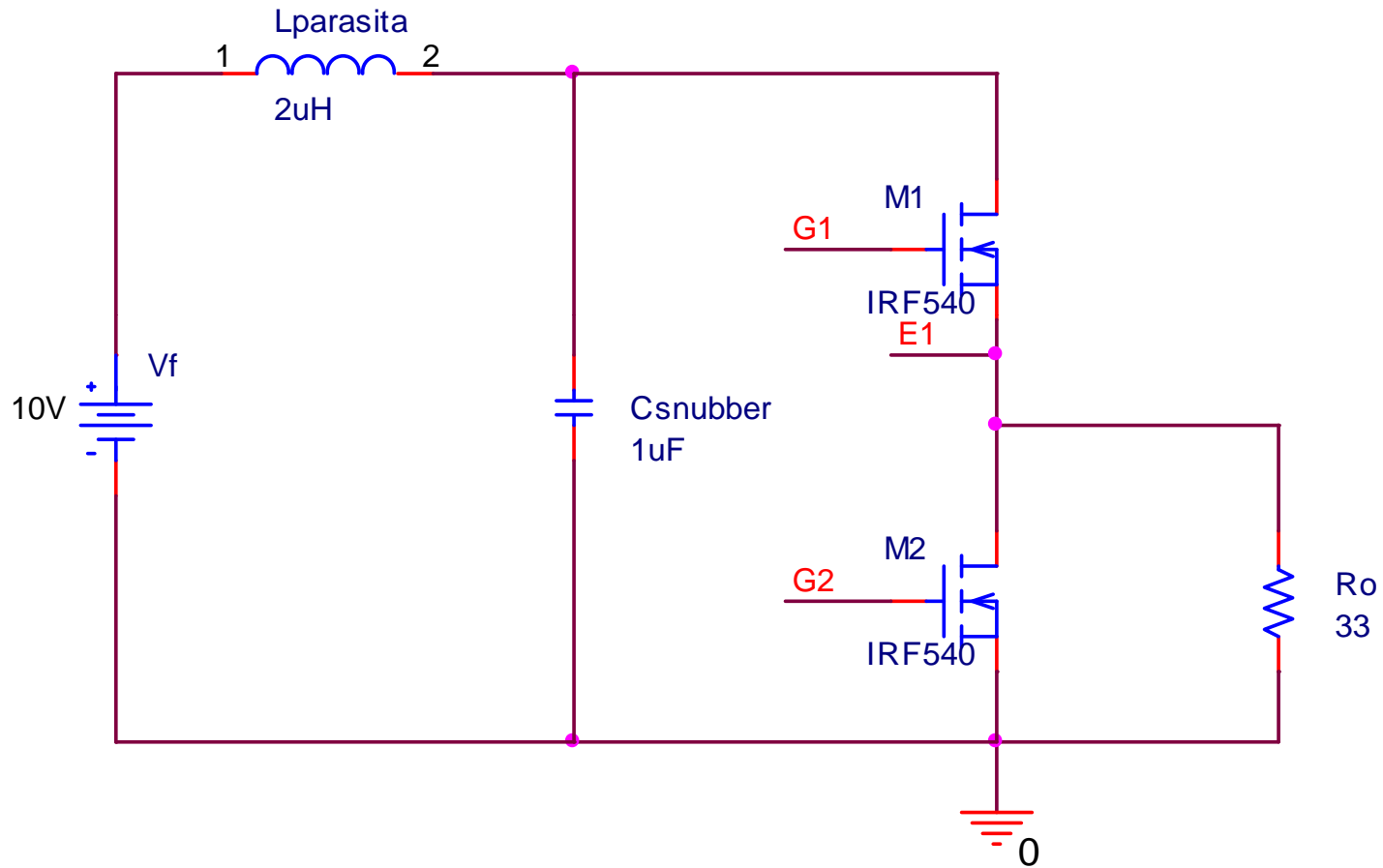
Circuito de acionamento dos interruptores



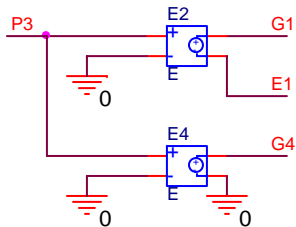
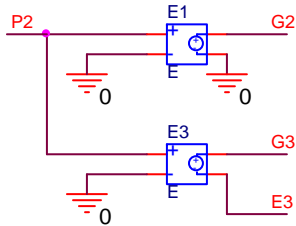
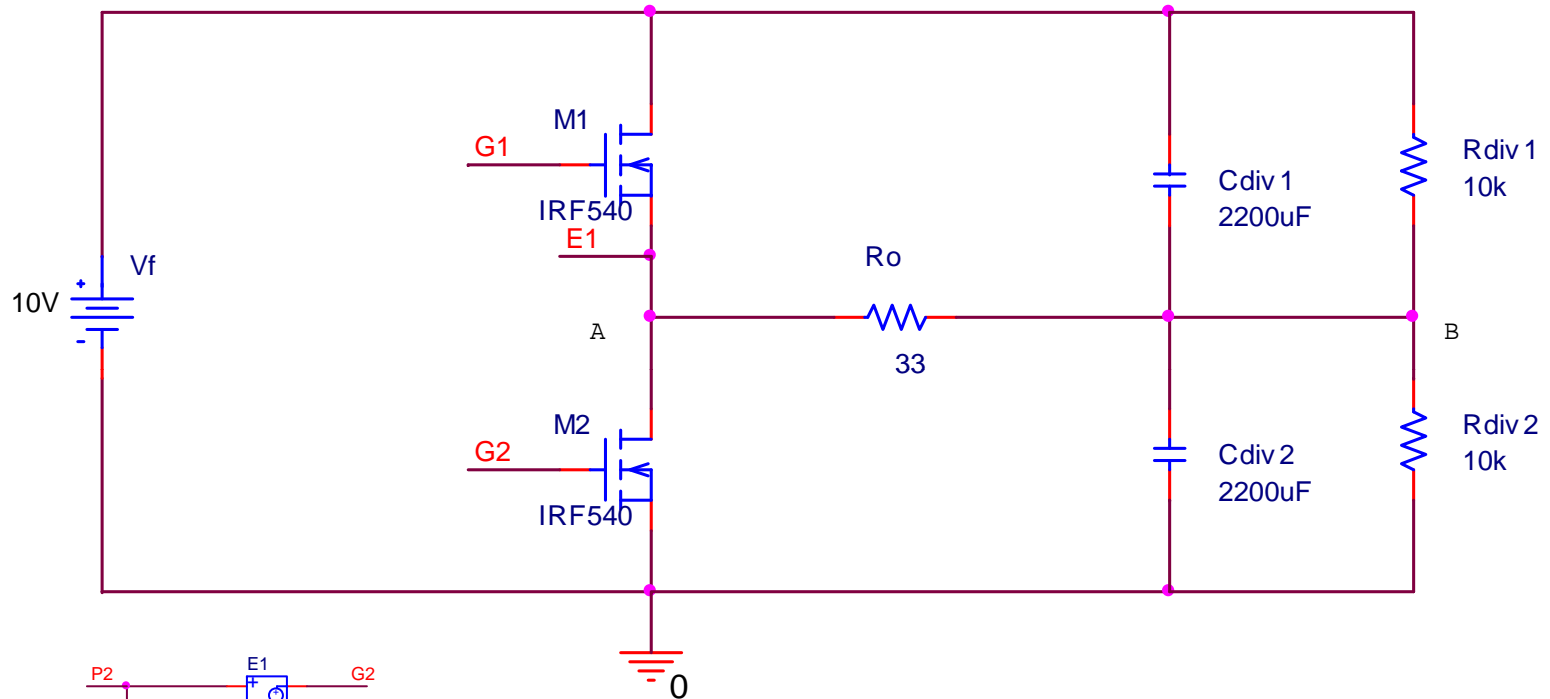
Conversor cc-cc bidirecional



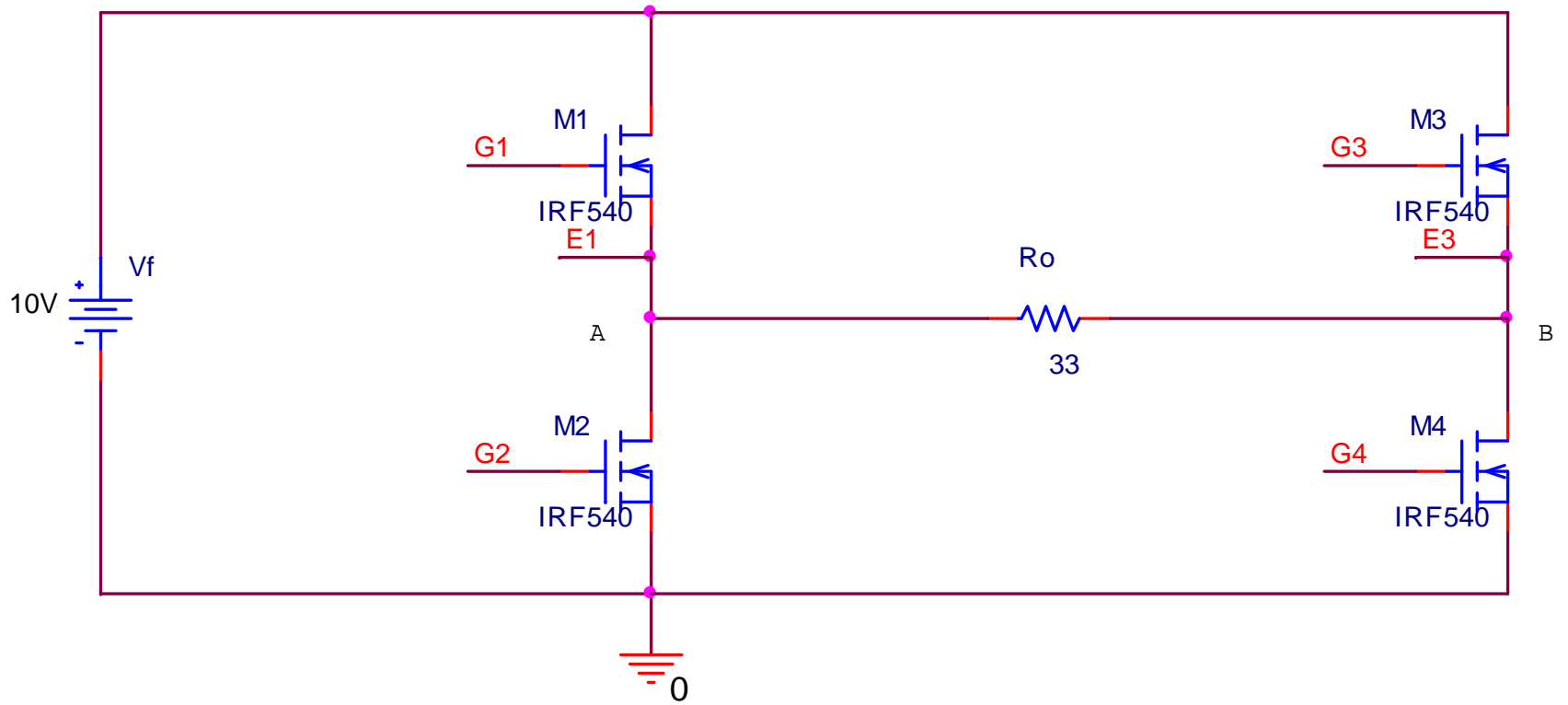
Conversor cc-cc bidirecional com snubber



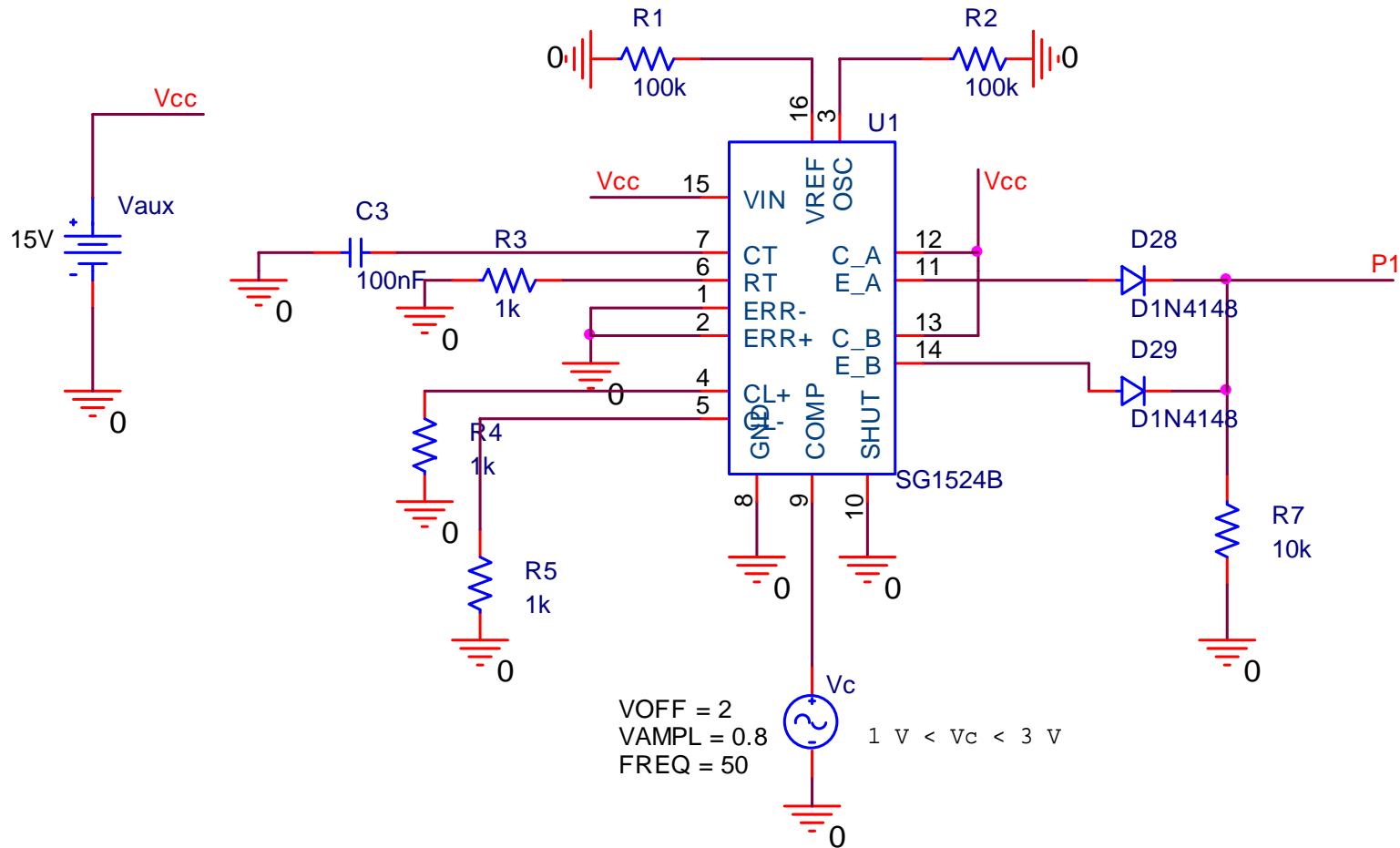
Inversor meia ponte



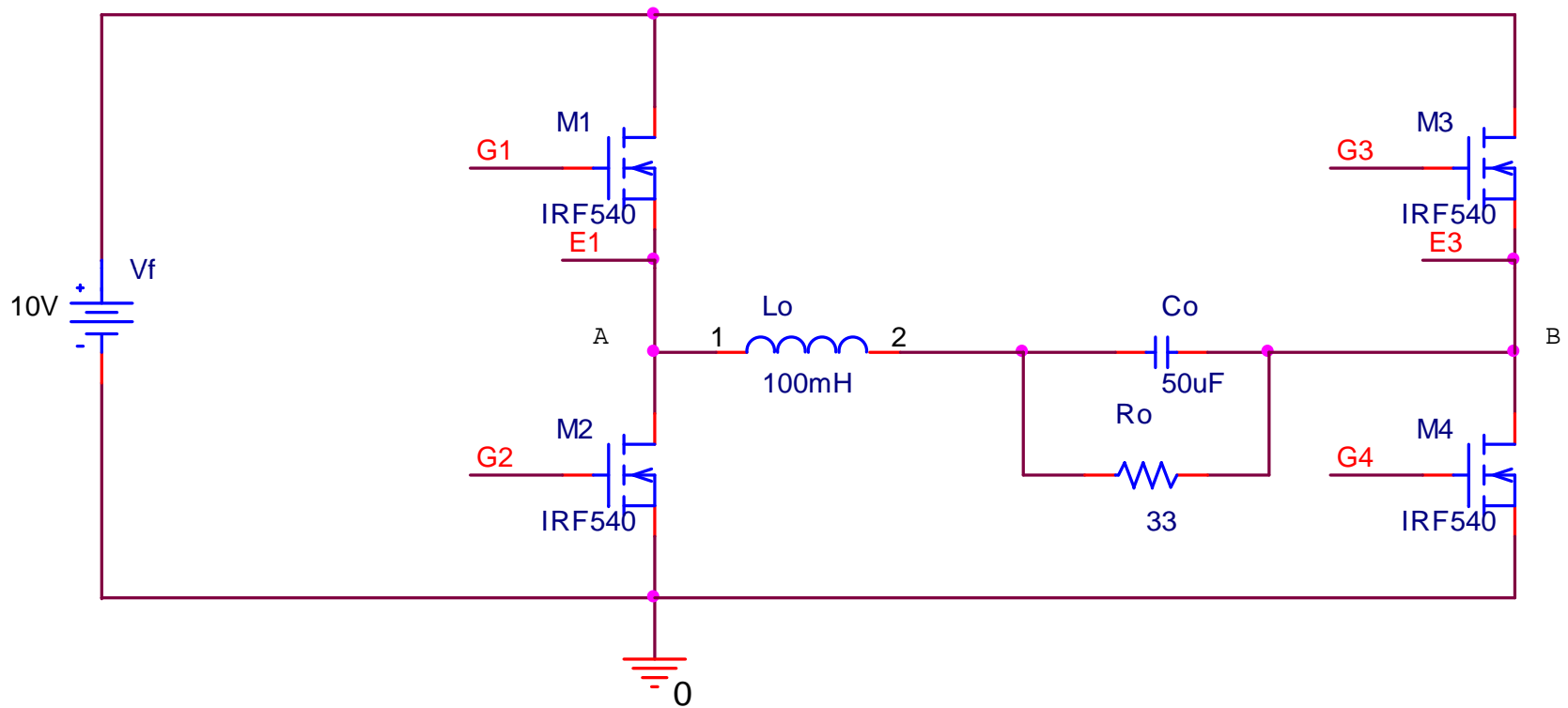
Inversor ponte completa monofásico PWM



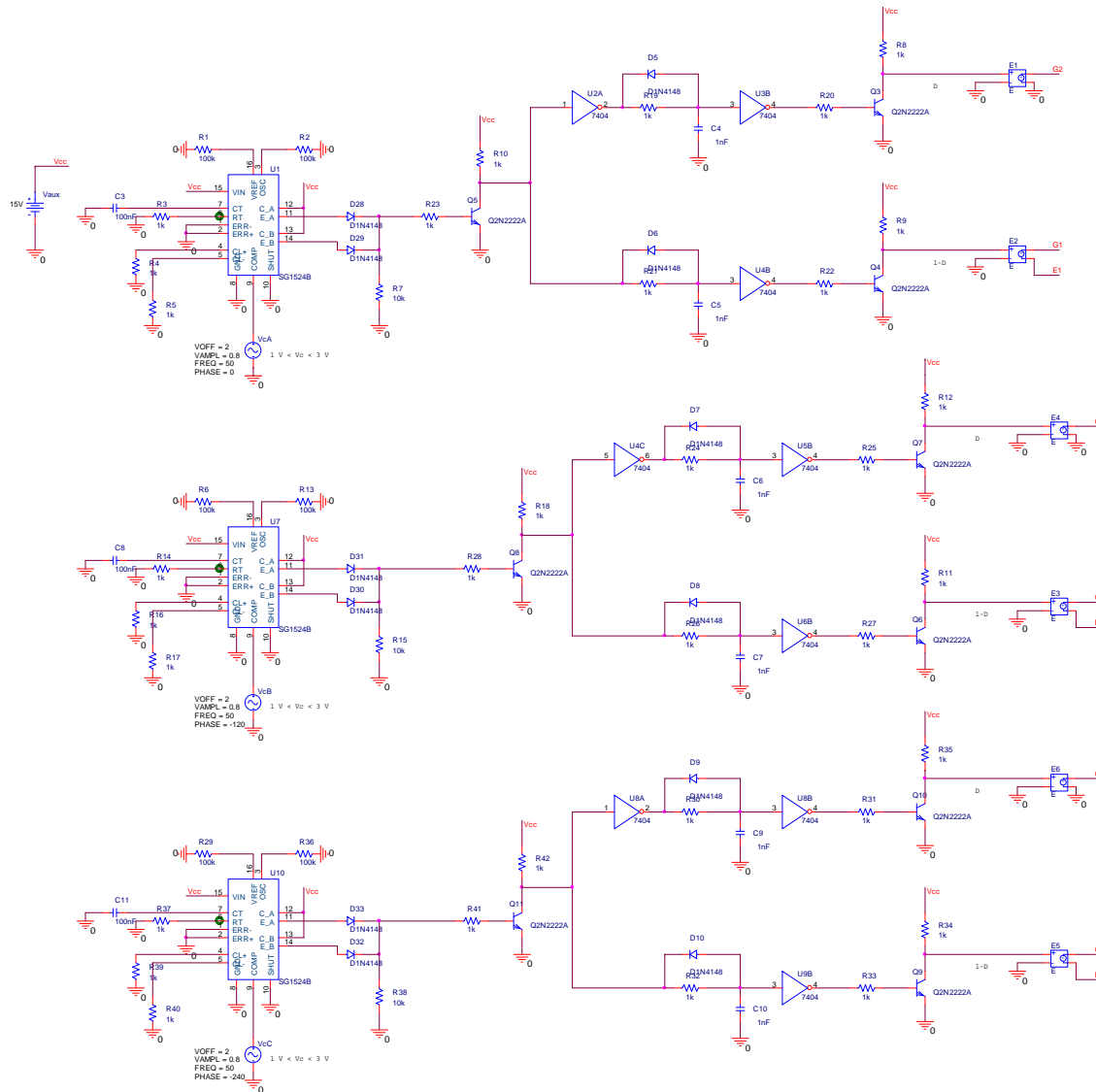
Inversor ponte completa monofásico PWM senoidal



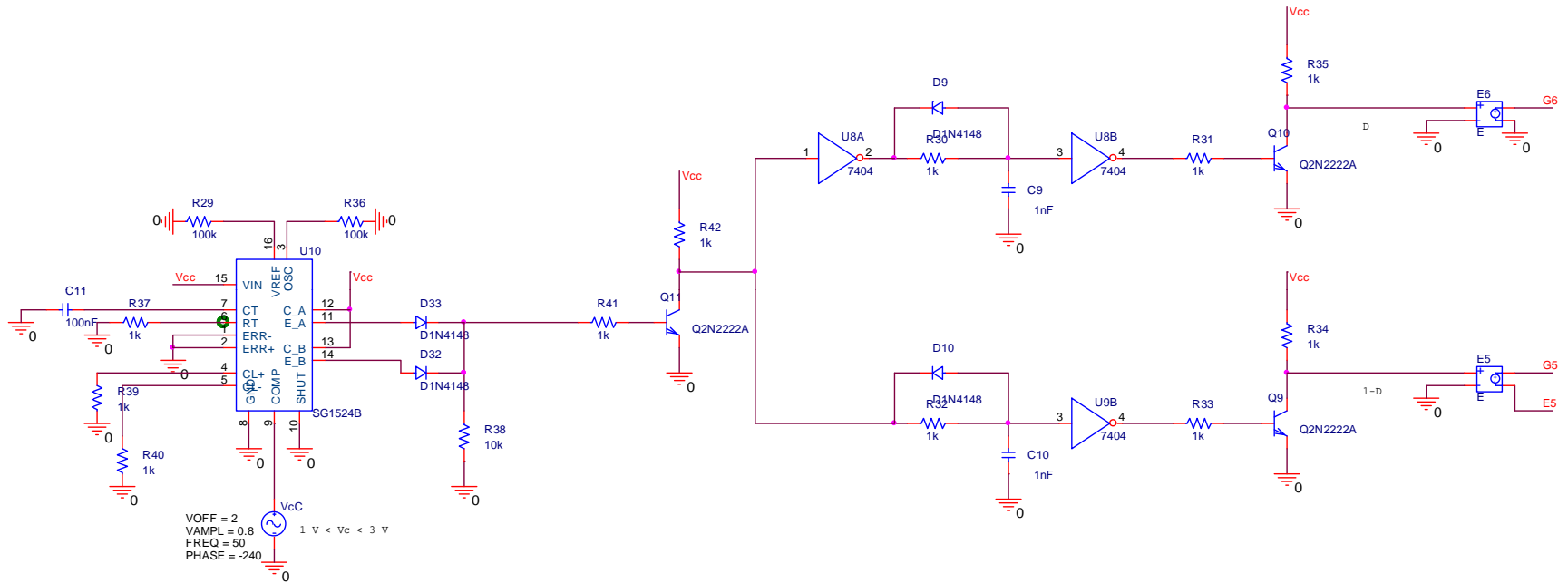
Inversor ponte completa monofásico PWM senoidal



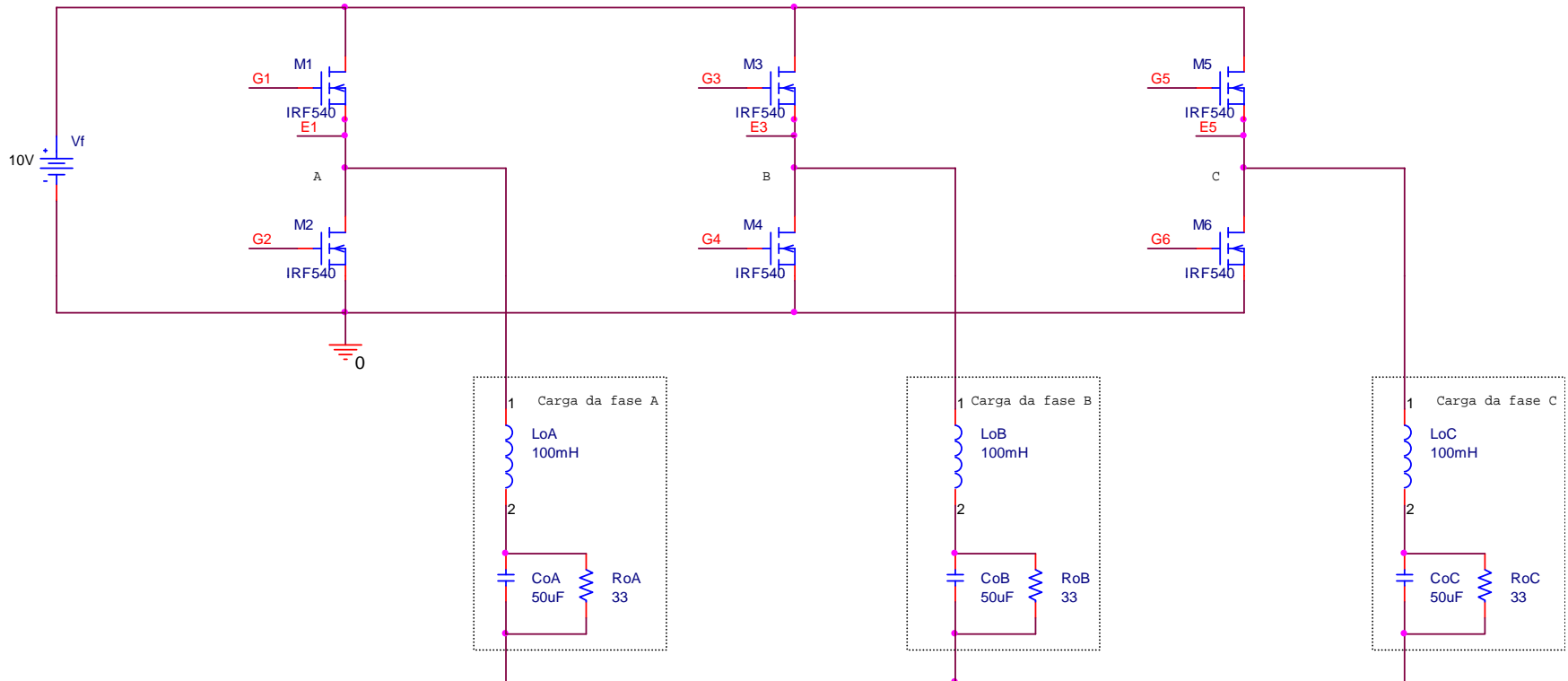
Inversor ponte completa trifásico PWM senoidal



Inversor ponte completa trifásico PWM senoidal



Inversor ponte completa trifásico PWM senoidal



Próxima aula

Capítulo 10: Inversores

1. Inversores de tensão trifásicos.

